

## Rope Driven Trolley for C-tracks

**This Koltek Rope Trolley is produced either for C-track KOT118 or KOT126 / KOT246**

The traverse trolley is equipped with a pulley wheel for manual rope operation. The length of the rope can be as long as required. You may buy the rope locally or we can include it in the delivery if you give us the required length.

The rope shall have a diameter of minimum 10 mm depending on type of rope.

The rollers are made from stainless steel and aluminium.

The trolley is equipped with suspension points for both the primary and the secondary wires.

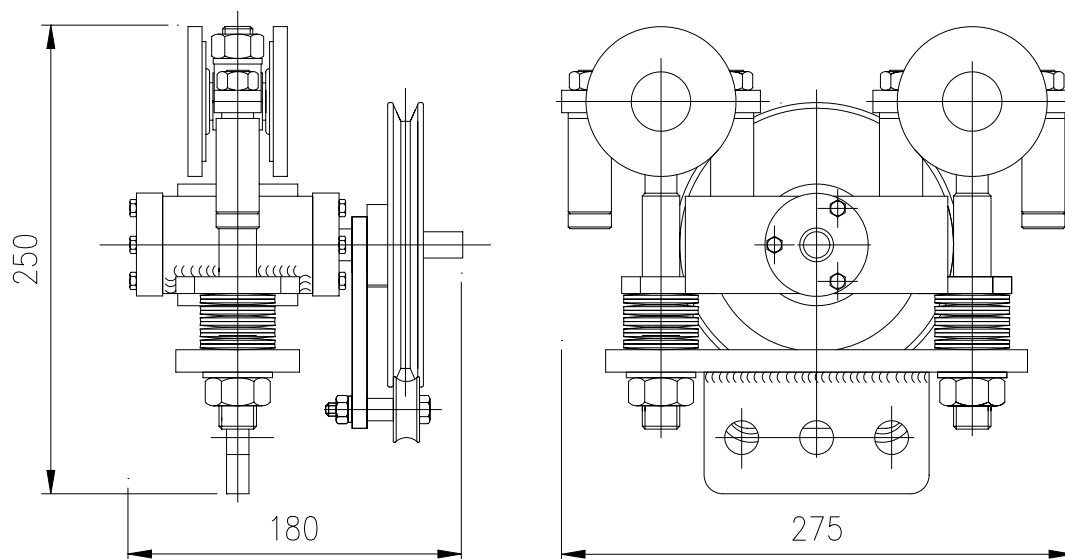


### Weight Data

Maximum SWL/WLL 400 Kg with trolley type HAR400-118. Net weight on trolley 6 Kg

Maximum SWL/WLL 600 Kg on HAR600-126 and HAR600-246. Net weight on trolley 9 Kg

### External Dimensions: HAR 600



**HAR 400 ( used on KOT118 ) will have dimensions (HxDxL) 195x180x260**